

# GRAND TOUR





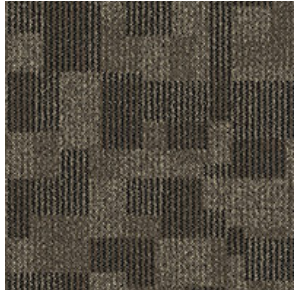


CONSTRUCTION	LOOP
PILE FIBER COMPOSITION	100% Nylon (Polyamide 6)
YARN TYPE	BCF
DYE METHOD	Solution Dyed
PILE WEIGHT	700 g/m <sup>2</sup>
NUMBER OF TUFTS	252800/m <sup>2</sup>
TUFTING GAUGE	1/10"
PRIMARY BACKING	Non-Woven
SECONDARY BACKING	<b>StableShield</b> - 100% Vinyl
TILE SIZE	50 cm x 50 cm
PILE HEIGHT	2.2 mm / 5.2 mm
TOTAL PILE HEIGHT	7.0 mm
PILE TREATMENT	INVISTA Anti-Soil Treatment, Anti-Microbial (Optional)
RECOMMENDED INSTALLATION	Quarter Turn or Brick

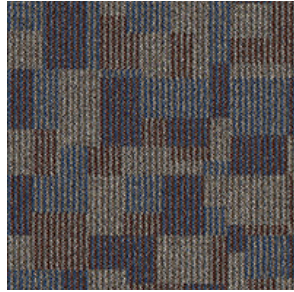
# SPECIFICATIONS



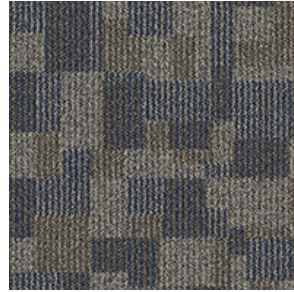
# COLOURLINE



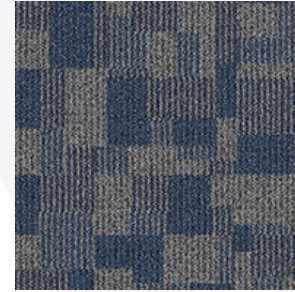
GRAND TOUR - 745



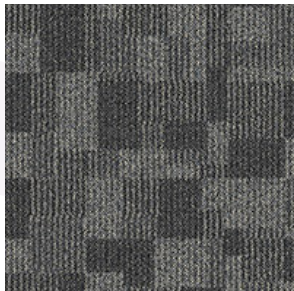
GRAND TOUR - 746



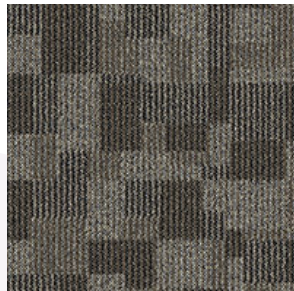
GRAND TOUR - 747



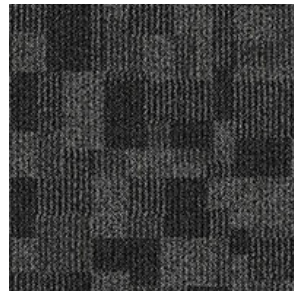
GRAND TOUR - 755



GRAND TOUR - 775



GRAND TOUR - 776

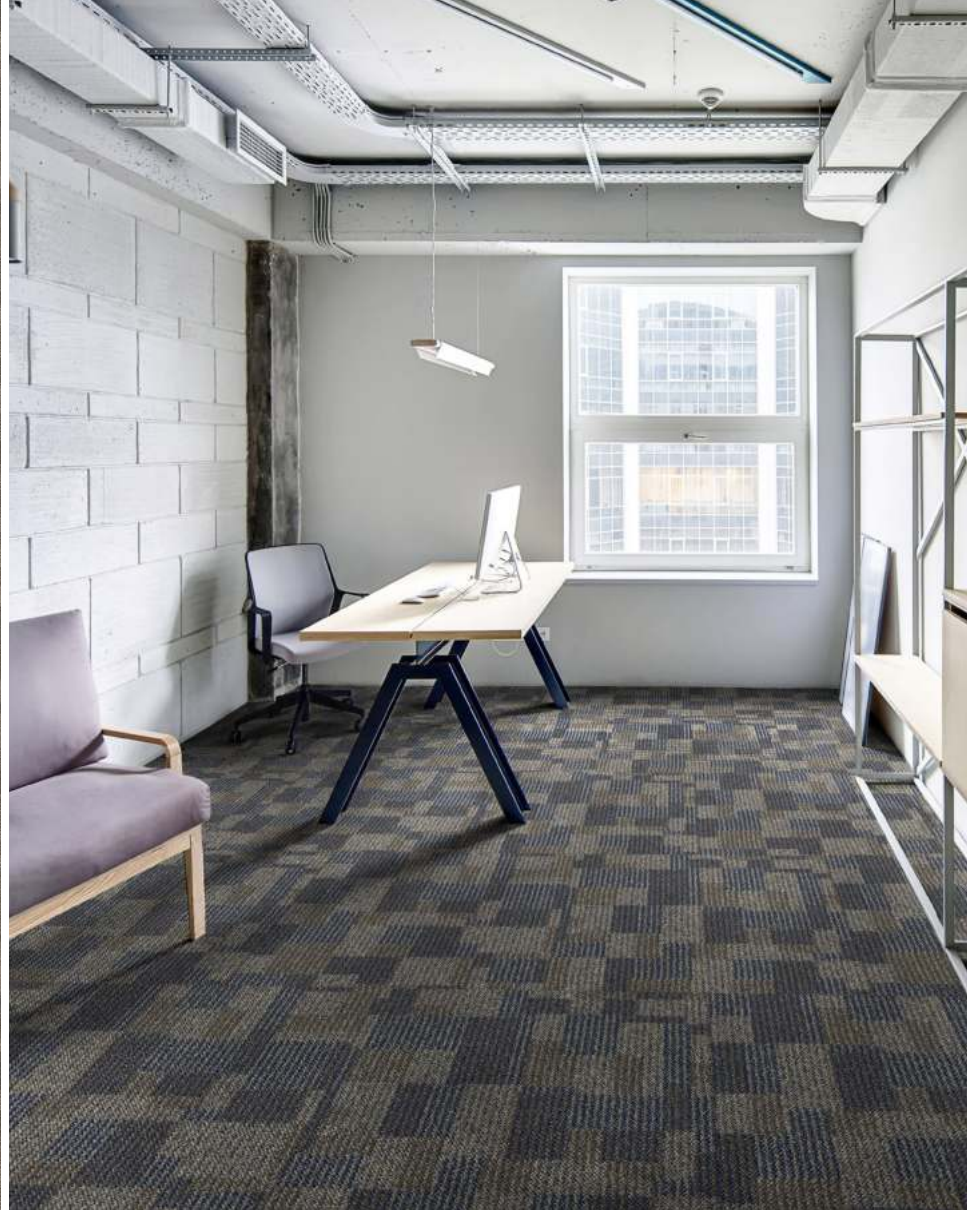


GRAND TOUR - 778

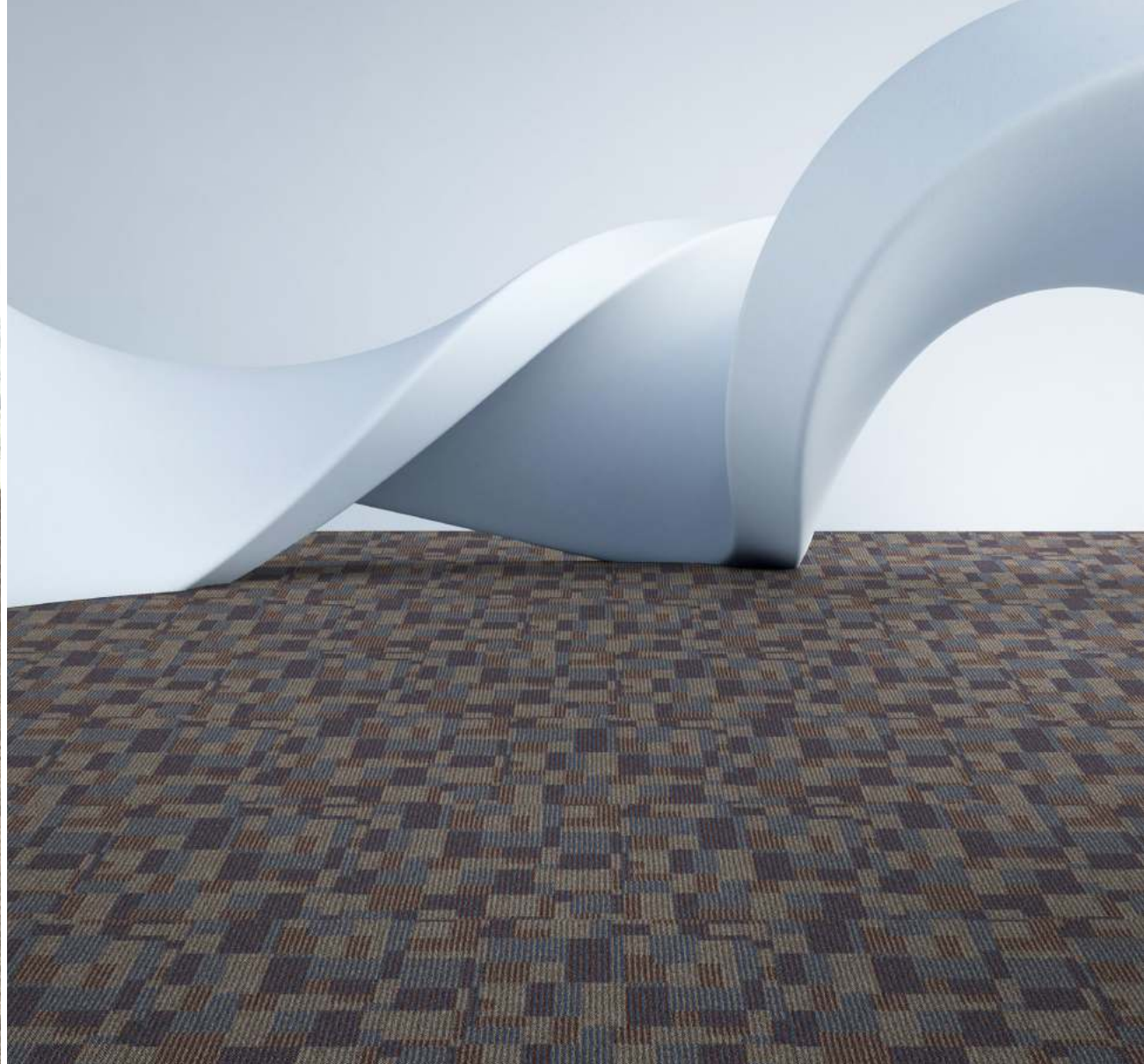


GRAND TOUR - 795



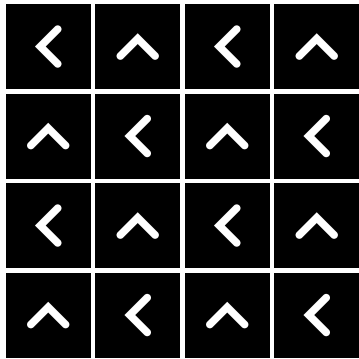




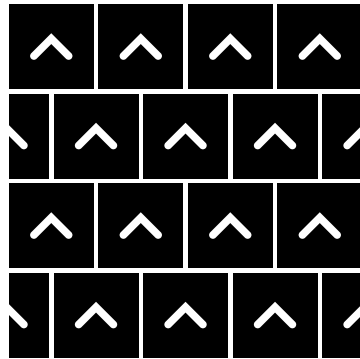


# HOW TO INSTALL

**QUARTER TURN**



**BRICK**





Standard  
*CARPETS*

[www.standardcarpets.com](http://www.standardcarpets.com)